

# ADAPTATION OF THE FRENCH HEAT HEALTH WATCH WARNING SYSTEM TO THE COVID19 PANDEMIC

MATHILDE PASCAL, KARINE LAAIDI, ROBIN LAGARRIGUE

MATHILDE.PASCAL@SANTEPUBLIQUEFRANCE.FR

26/05/2020

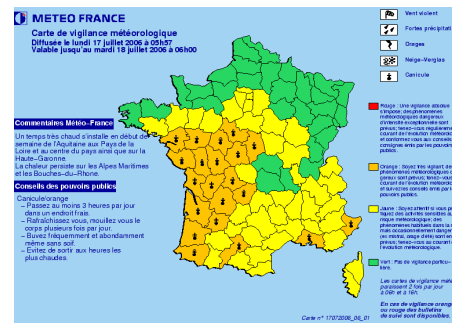
- National Heat Wave Prevention plan since 2004
- Equilibrium btw short-term response /long-term adaption
- Short-term response based on 4 axes



**Protection**  
of vulnerable  
people in nursing  
homes



**Identification**  
of vulnerable  
people at home

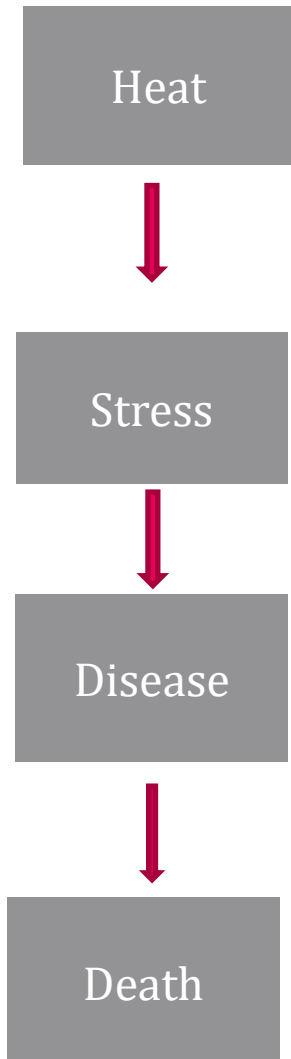


**Warning**  
Meteo and health



**Communication**

# COVID MAIN CONSEQUENCES ON THE HEAT – HEALTH CAUSAL CHAIN



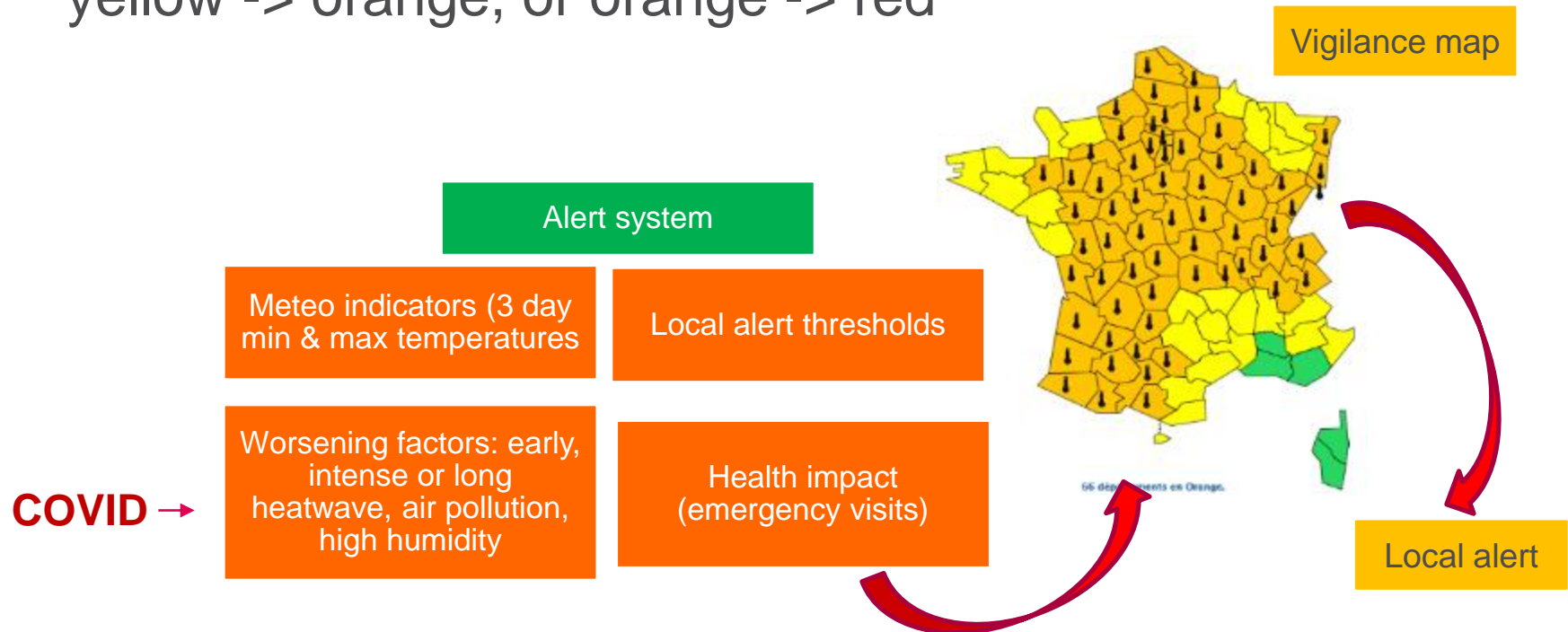
- COVID influence on heat exposure
  - lockdown, restricted access to cool areas, ventilation, protective gear...
- COVID influence on individual susceptibility
  - social isolation, exhaustion, synergies between symptoms
- COVID influence on access to health care
  - social isolation, lockdown, conflicting risks perception, disruption of the health care system

# MAIN RECOMMENDATIONS FROM THE HIGH COUNCIL FOR PUBLIC HEALTH (HCSP)

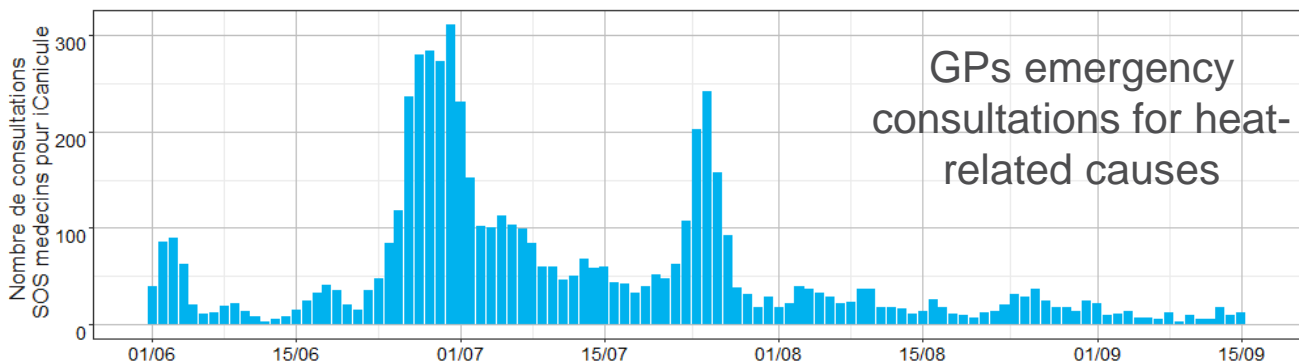
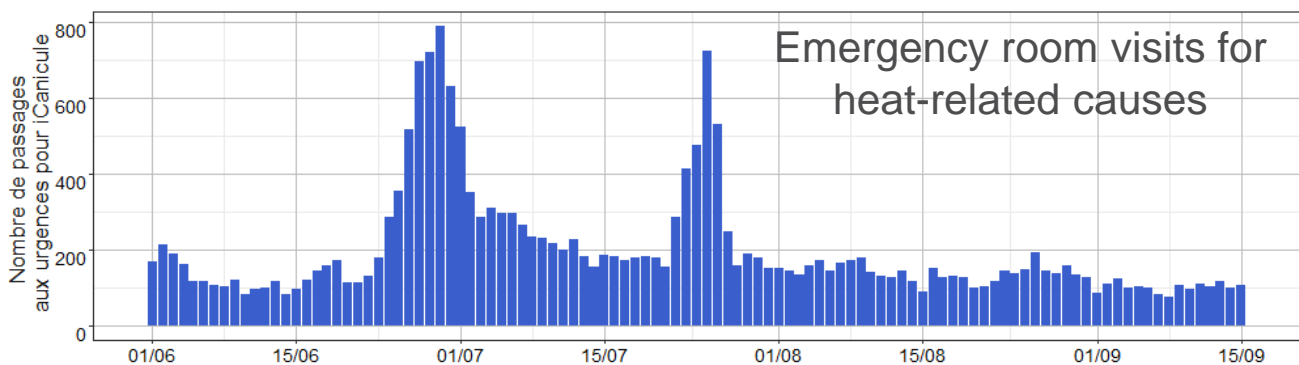
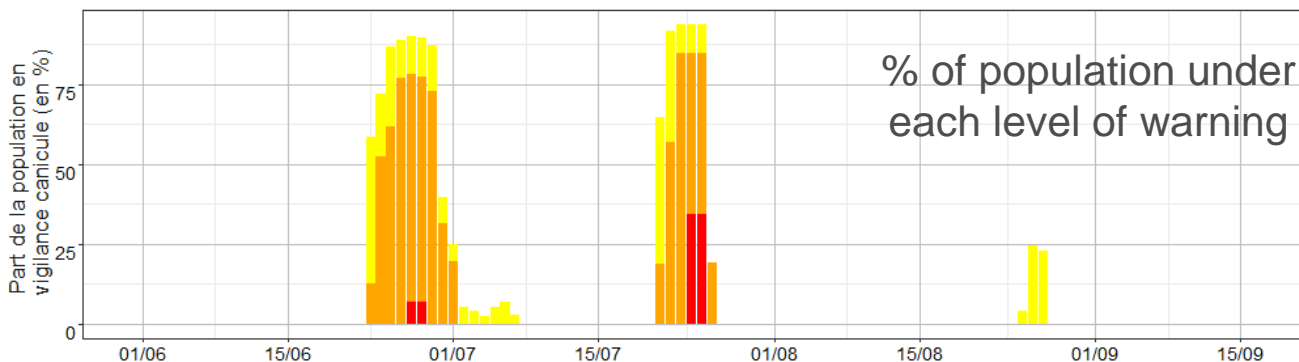
- Fear of COVID must not interfere with the handling of a heat wave
- Health professionals must be trained to identify COVID vs heat-related symptoms and to adapt treatments
- Access to natural, green, cool areas, public showers, with relevant physical distancing should be authorized
- Adequate ventilation / air conditioning systems must be used and well-maintained
- At-home visit of the most vulnerable must be maintained, following COVID key preventive behaviors
- The number of protective gears should be increased

# ADAPTATION OF THE HEAT WARNING SYSTEM

- An assessment of the COVID vulnerability of each « county » will be shared with Météo-France daily
- It may lead to rise the warning level from yellow -> orange, or orange -> red



# ADAPTATION OF THE HEAT-HEALTH SURVEILLANCE SYSTEM



**New 2020 indicator:**

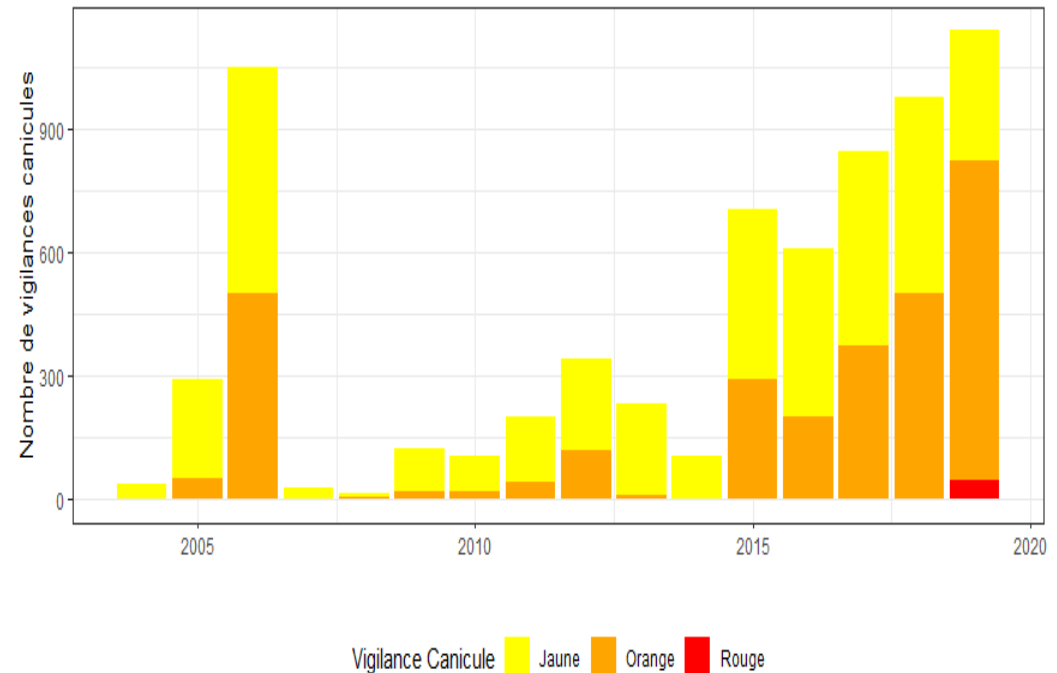
Critical care hospitalization for heat-related causes

# ADAPTATION OF THE COMMUNICATION PLAN

- Dedicated radio spots to give advices on heat wave and lockdown
- COVID visitors trained to provide heat-related advices
- City halls may be authorized to cross databases to identify vulnerable people

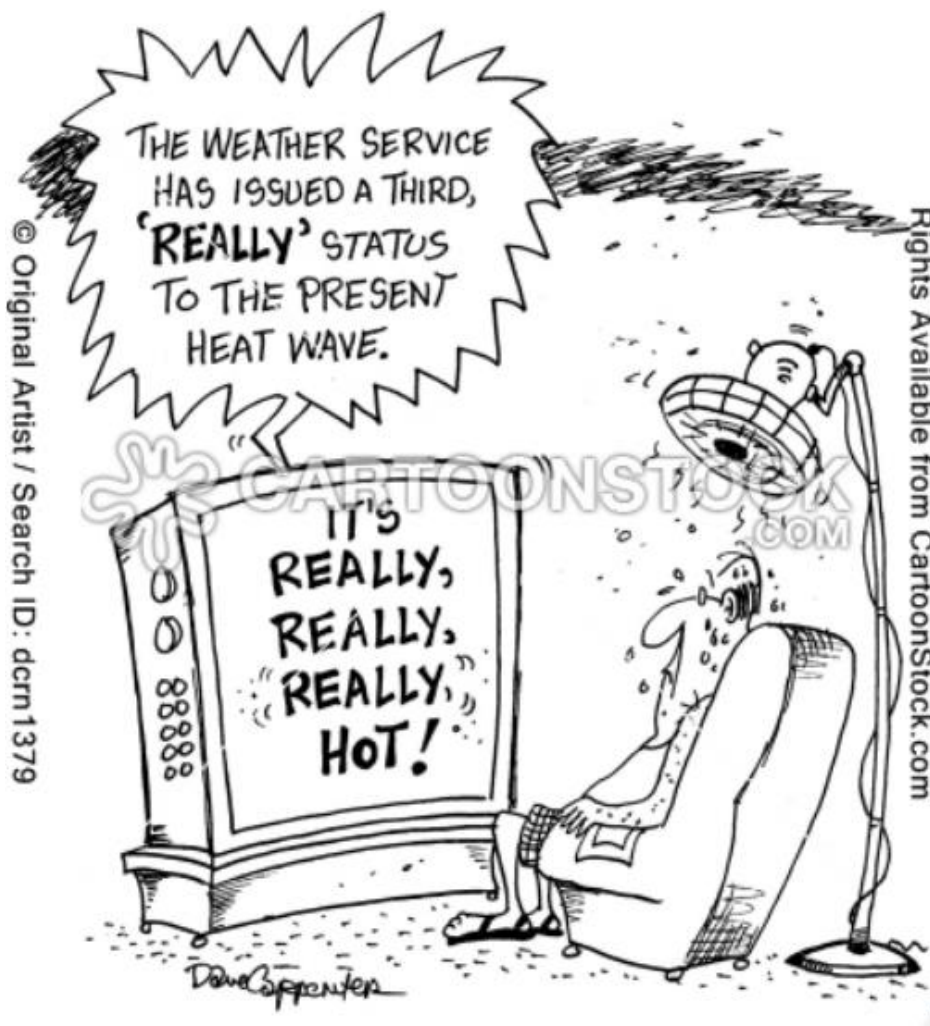


- Météo-France models predict a warm summer
- Close communication between Météo-France, SpFrance and the national and regional health authorities



- Sharing of information / ideas / questions / experiences between countries during and after the summer would be welcome! *(a dedicated hub launched by WHO?)*





*Thank you!*